

RCT-35 BM

Hose Retriever for PCAir Systems



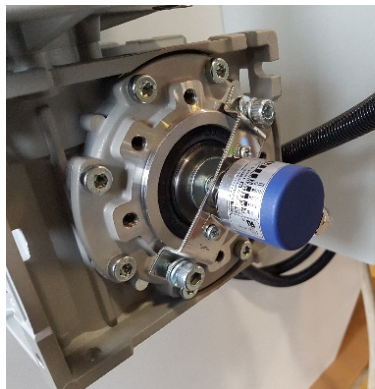
- **ATES RCT-35BM** PCAir Hose Retriever is designed to handle up to 35 m of flat insulated hose to reach all the aircraft, including the MD80, preconditioned air connection.
- The Retriever, equipped with a radio control on the aircraft adapter, needs only one person to be operated. Frame and panels are in zinc coated steel, painted in end user's colour.
- Maintenance operations can be easily performed.
- The Retriever is light-weight, protects the hose against eventual damages and from the inclemency of the weather.
- Ease of disassembly and improved recycling rates of materials

Standard features:

- Zinc coated steel panels, painted in end user's colour
- Rotating drum with special designed surfaces to reduce air pressure drop (approx. 500 Pa)
- Twin limit switch: "hose all out" limit controlled by encoder, allowing the correct and steady alignment of the drum; "hose all in" photocells sensing the 14" to 8" reduction of the hose immediately before the aircraft adapter
- Double roller pressor to ensure correct rewinding of the hose on the drum
- Interlocks with bridge movement (enabled only when the hose is all in) and PCAir start (enabled only when the hose is all out)
- Remote control on the aircraft coupler between the two handles to allow the operator the most comfortable and easy winding/unwinding operation



RCT-35 BM PCAir
Hose Retriever, bridge mounted



"Hose all out"
encoder



"Hose all in"
photocell limit switch

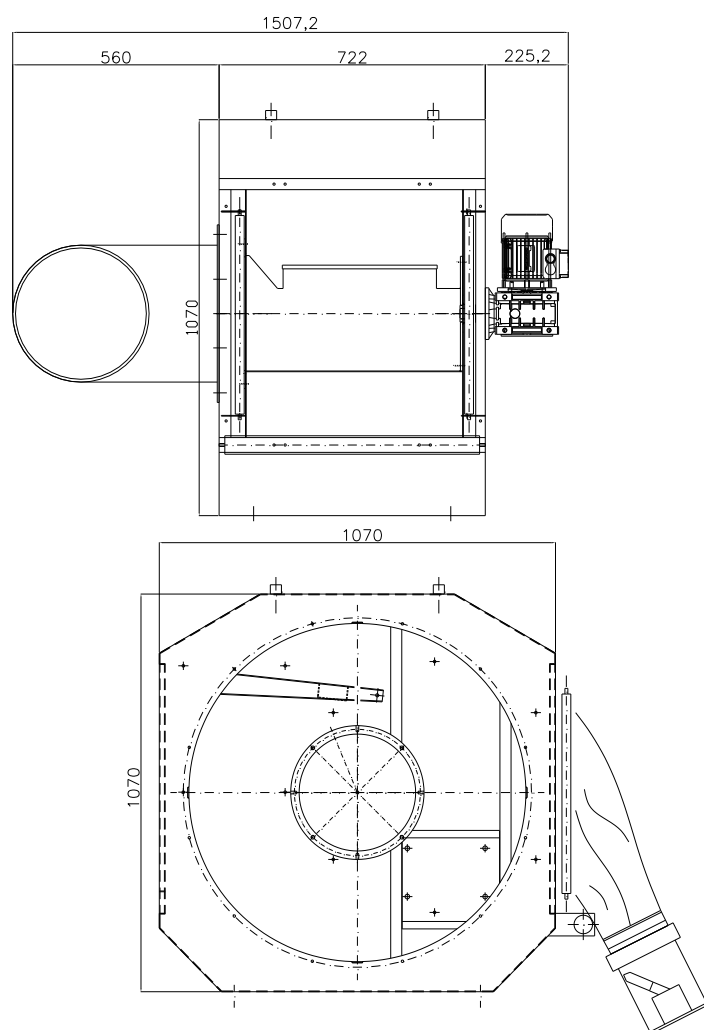
RCT-35 BM Specifications

Input power:	3x400V, 50 Hz, 2.5A Other inputs available on request
Gear motor:	1500 rpm isolation class F, 0.55 kW
Power transmission by:	0.75 kW motor controlled by Variable Frequency Drive
Electrical panel:	IP65
Mobile control system:	Receiver unit with antenna outside the electrical panel and transmitter unit mounted on the aircraft coupler
Fixed control station (option):	Integrated with PCAir control station
Hose storage drum:	Zinc coated steel
Frame and canopy	Zinc coated steel, finish in end user's colour
PCAir Hose:	ATES Flat 14" insulated hose up to 35 meters
Aircraft coupler:	Male 8"
Operating speed:	About 15 m/min both in unwinding and rewinding mode

Compliances

- 2006/42/UE Machinery Directive
- 2014/35/UE Low Voltage Directive
- 2014/30/UE Electromagnetic Compatibility (EMC) Directive
- CEI EN 61439-1 Low Voltage switchgear and controlgear assemblies – General Rules
- CEI EN 61439-2 Standards for power panels
- 99/5/UE Radio & Telecommunications Terminal Equipment (R&TTE) Directive

Dimensions and weight



Dimensions: Width: 722 mm (without gear motor nor inlet elbow)
 Depth: 1070 mm
 Height: 1070 mm

Weight: 150 kg without hose
 230 kg with 35 m long hose