



Potable  
Water Cabinet  
References  
A.T.E.S. Italiana  
Milano, Italy

1999

Project:  
**PWC System**

End User:  
**Spanish Airport**

Equipment supplied:  
**Nb. 6 A.T.E.S. WD-30 Potable Water Cabinet with 30 m hose**

A.T.E.S. Services: **Supply**



# OPORTO, PT

## 2000



Project: **PWC System**

End User: **Oporto Airport, Portugal**

Equipment supplied:  
**Nb. 7 ATES WD-30 Potable Water Cabinet**  
**With 30 m hose**

A.T.E.S. Services: **Supply**



# PRAGUE, CZ

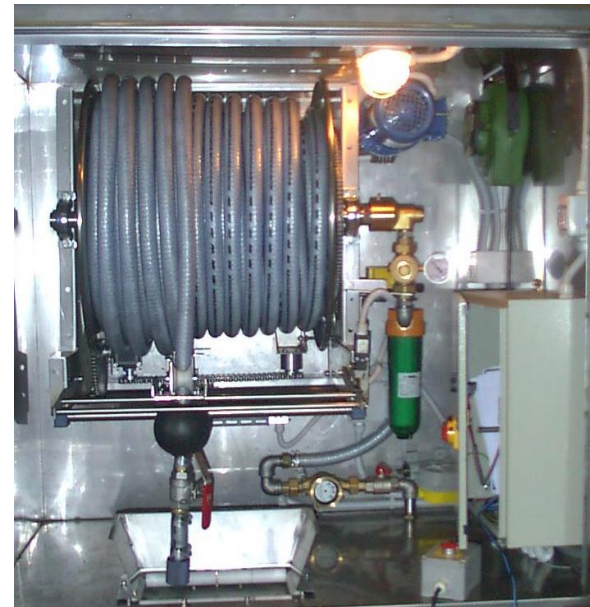
## 2002

Project:  
**PWC System**

End User: **Prague Airport, CZ**

Equipment supplied:  
**Nb. 6 ATES WD-60 Potable Water Cabinet  
with 60 m hose**

A.T.E.S. Services.: **Supply**



# MILANO MALPENSA 2012/2013

Project:  
**PWC System for PBBs**  
**Terminal T1, 3° /3° , Satellite C**

End User:  
**SEA, Aeroporto Milano Malpensa**

Equipment supplied:  
**Nb. 10 A.T.E.S. WD-70 Potable Water Cabinet**  
**With 70 m hose**

A.T.E.S. Services: **Supply, installation, commissioning**

